



The right decision.

Innovative solutions
for the smart home.





NEW PRODUCTS
& UPDATES

Our newsletter.
Register now!

Hi. It's us, ise.

Embedded in Oldenburg.

WE HAVE A DEEP PASSION FOR OUR IDEAS AND THE QUALITY OF OUR WORK.

As the saying goes, Oldenburg – not too big, not too small. Home to friendly people, kale and ise. Chilly outside, but warm at heart. Since 1996, we have dedicated endless passion to the development of software and electronic products for the professional smart home sector.

We're currently made up of 150 talented technology specialists from all over the world. Regardless of where we come from, though, we all have one thing in common: source code, not dress code! We develop with a passion. Whether it's for desktops, embedded systems and server/PC software or app solutions for smartphones and tablets, our team of committed women and men guarantee creative and reliable solutions to even the most complex problems.



KNX **SDA** **SONOS** **Vaillant**

AXIS COMMUNICATIONS **Saunier Duval** **Panasonic** **hue** **viega**

Strong brands for e-mobility

ABB **ABL** **ALFEN** **ebee** **HEIDELBERG** **KEBA**
POWER TO ADAPT SMART TECHNOLOGIES Automation by innovation.

MENNEKES **Schneider Electric** **SCHRACK TECHNIK** **mobility** **... and rising with every update!**
MADE BY STÖHR

We think smart buildings need smart ideas.

Every day, we work to ensure that KNX can do more to make living spaces even smarter.

Our vision is to integrate every device into building automation with KNX.

This catalogue presents our entire portfolio of products, which we have developed with exceptional quality, in-depth expertise and a profound passion for smart living.

Let's go!

Our products.

SMART CONNECT KNX Remote Access Anywhere and still at home.	6
SMART CONNECT KNX e-charge II Charging. The smart way.	12
SMART CONNECT KNX Sonos Sonos is rocking out with KNX.	18
SMART CONNECT KNX Hue Light on, dimmed or coloured.	22
SMART CONNECT KNX Vaillant Vaillant feels good with KNX.	26
SMART CONNECT KNX viema Innovative single-room control.	30
SMART CONNECT KNX Saunier Duval Saunier Duval snuggles up with KNX.	34
SMART CONNECT Modbus Vaillant Easy access to Vaillant GeoTHERM/3.	38
SMART CONNECT KNX Panasonic Smart home entertainment for your smart home.	42
SMART APP KNX Axis KNX now has eyes.	46
SMART CONNECT KNX Programmable Everything's possible with Programmable.	50
KNX RF USB stick Into the world of KNX. The spark of new freedom.	54
Test living in a KNX home Experience our products live.	56



Anywhere and still at home.

SMART CONNECT KNX Remote Access

Easy setup and remote configuration and operation – for easier work and reduced costs for configuration, installation and maintenance. End customers save costly installer call-outs and can access their network remotely to control visualisations, for instance.



Plus points

- | Secure and simple teleservicing from anywhere (e.g. ETS, various configuration tools, heating systems, etc.)
- | Flexible remote access on the go (e.g. visualisations, printers, cameras, etc.)
- | Meet customer requirements faster – no more appointments or journey times
- | Quick setup – no router configuration required
- | Independent of provider and type of Internet access (LTE, UMTS, etc.)
- | Security through access control and encryption
- | Event notification via push, e-mail, SMS or voice call
- | Convenient notification and attachment viewing in the MySDA app for smartphones
- | No follow-up costs (excluding SMS services, voice calls)*

Technical data

Rated voltage:	DC 24 V to 30 V
Power consumption:	2 W
IP communication:	Ethernet 10/100 BaseT
KNX communication:	KNX/TP, S mode
KNX medium:	TP1-256
microSD card:	Up to 32 GB (SDHC)
Connections:	2 x RJ45 (integrated switch) Connection and branch terminals for KNX and 24 V
Ambient temperature:	0 °C to +45 °C
Dimensions:	2 HP (DRA plus)

Note: Supply via external DC 24 V. The microSD card is not included in the scope of supply. For ETS5 or higher.



Ordering info:
Order no. 1-0003-004

* Chargeable additional service sms77 or Messagebird

TELESERVICING FROM ANYWHERE

Qualified electricians save themselves and their customers time-consuming call-outs and use their resources efficiently! Desired changes and system maintenance can be carried out quickly and individually from the office or even while on the go – anywhere in the world.

Maximum flexibility is also guaranteed: KNX system maintenance is possible via ETS and even non-KNX systems such as heating or telephone systems can be maintained via the integrated OpenVPN server.



ACCESS VIA VPN

The SMART CONNECT KNX Remote Access can function as an OpenVPN server. This makes it possible to work in the remote network without complicated router settings and to carry out remote maintenance flexibly – not only using ETS, but also with a variety of other configuration tools. VPN access also provides end customers with convenient remote access to their home network in order to control their visualisation remotely, for instance.

REMOTE ACCESS TO YOUR VISUALISATION

You can also access your visualisation remotely, making sure you can keep an eye on your building at all times. Regardless of whether the visualisation is web-based or not, the integrated VPN gives you flexible access to all devices in the network!



REMOTE DIAGNOSTICS ANYWHERE AT ANY TIME

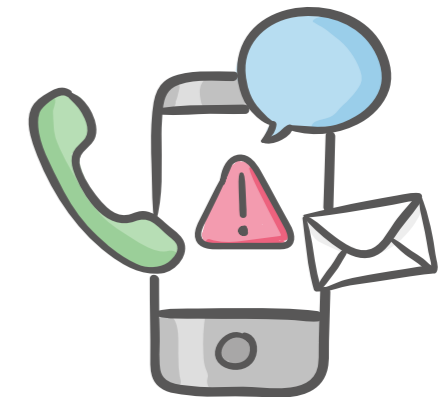
If desired, the data logger can record all KNX telegrams on an SD card. In the event of installation problems, simply import the logs into the ETS group monitor and identify the cause – without having to visit the customer or lie in wait "live" for hours!

IMPORTANT EVENTS ON YOUR SMARTPHONE

Is everything OK at home? Our remote access provides support for up to 50 notifications at different danger levels. Is it just someone ringing the doorbell or has the smoke alarm device gone off? You will receive notifications on your smartphone. Whether push notification, voice call, SMS or e-mail, you decide how you'd like to be informed.

You can configure each trigger for notifications individually based on filters, conditions or by threshold value with or without hysteresis. For example, you will only receive a notification when the room temperature drops to a level that you have specified. And if you use surveillance cameras, you can configure notifications to include a current image as an attachment.

The MySDA app for your smartphone means you can conveniently view your notifications, scroll through attachments and access devices in your home network via the "Links" function.



INACCESSIBLE FROM OUTSIDE?

Is the IP address of your connection inaccessible from outside because you are connected via LTE or UMTS, for instance? No problem! Our solution works here, too.

SECURITY

You decide who can access your system with the simple press of a button via our access and user management. Thanks to data transfer encryption, there's no chance of prying eyes. The SMART CONNECT KNX Remote Access also supports KNX Secure for secure data transfer on the KNX bus.

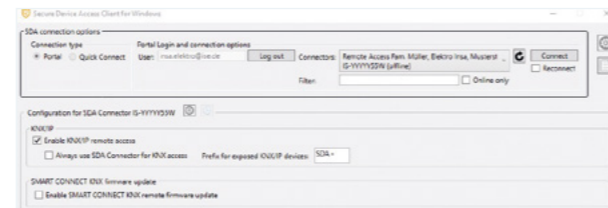
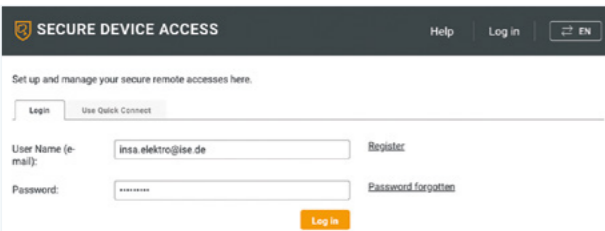
An eye on everything

- | Secure teleservicing and configuration of KNX systems via ETS
- | Thanks to integrated VPN¹, all devices and systems in the network can be maintained remotely
- | Secure remote access to devices in the network (e.g. visualisations, routers, network storage, printers, cameras)
- | Convenient remote diagnostics by storing and retrieving telegram recordings with the data logger
- | Up to 50 notifications (push, e-mail, SMS², voice call², IFTTT), optionally with attachments
- | Individual configuration of notification triggers (filters, conditions, threshold values, hysteresis)
- | Convenient viewing of notifications and attachments in the MySDA app for smartphones
- | Clock function to send time and date to the bus in configurable intervals
- | Full KNX Secure support
- | Access management with users and groups, can also be controlled via KNX objects
- | Secure data transfer through encryption
- | Integrated Ethernet switch with 2 x RJ45 sockets
- | Integrated IP interface with up to three tunnel connections (e.g. for ETS bus or group monitor)
- | Regardless of the type of Internet access (e.g. LTE, UMTS)
- | Optimised KNX/IP communication via mobile and very slow connections
- | Unlimited usage duration and 5 years of guaranteed server operation
- | Server located in Germany in accordance with GDPR and German Federal Data Protection Act (BDSG)
- | Additions via firmware updates

One way of many: four simple steps to the KNX system.

1. Insert and connect device:

Simply place on the top-hat rail and connect the KNX IP network and power supply.



2. Register the device on the portal:

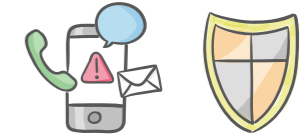
Log onto the portal www.securedeviceaccess.net with your user data and register the SMART CONNECT KNX Remote Access with its registration ID (one-off).

3. Install and launch the SDA client software for windows:

Download the SDA client for Windows from www.ise.de/service/downloads and install it on your PC. Launch the SDA client software and enter your user data. Select the registered device and open the connection.

4. Start the ETS, select interface and you're ready to go:

Start your ETS Professional and select a bus connection. You can now work with the ETS as normal, just as if you were there in person.



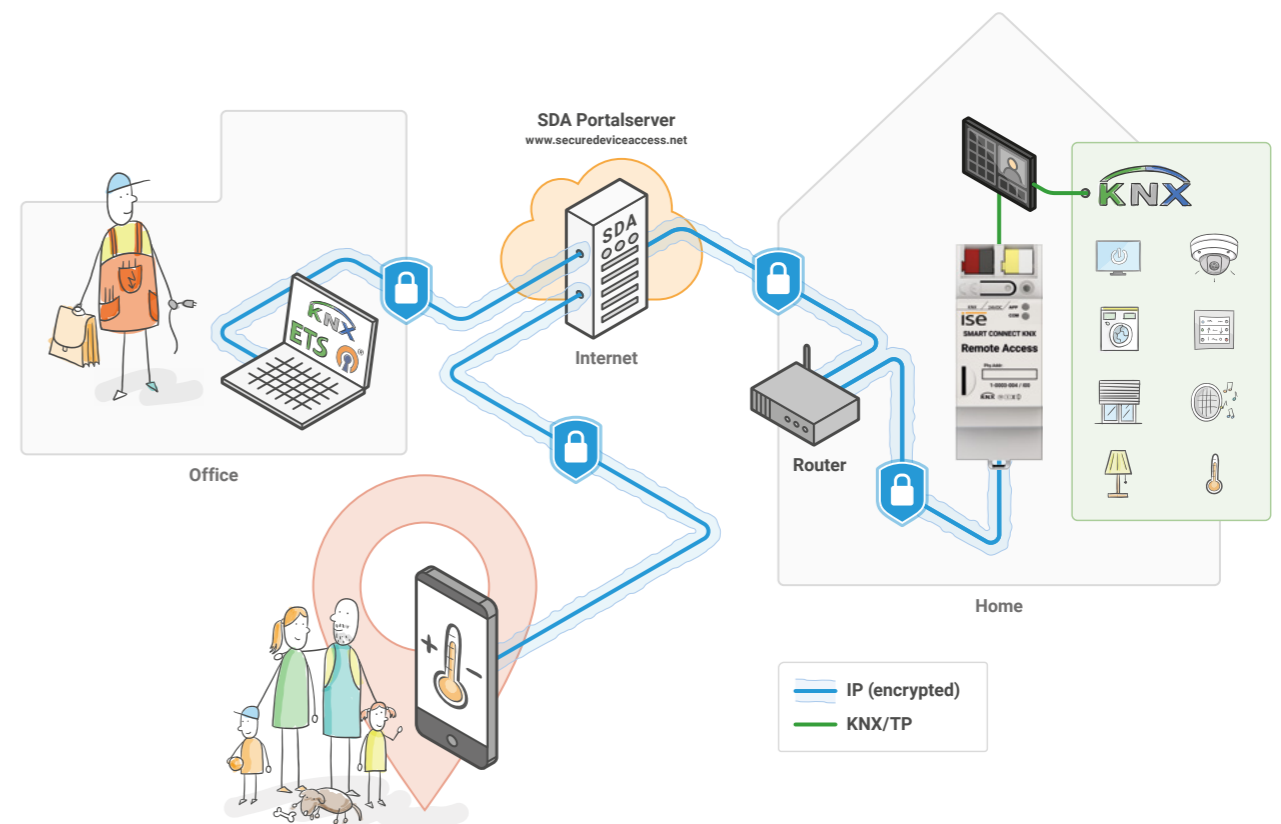
How it works.

The SMART CONNECT KNX Remote Access is simply connected to the home network. It connects to the portal server (www.securedeviceaccess.net) automatically through your existing Internet access. Communication between the Remote Access and the portal server is encrypted and secured with digital certificates. The portal server is located in Germany and is subject to the German Data Protection Law and the GDPR.

With a connection to the home network, all network devices can be accessed via the Internet. Depending on the device's supported network protocols, access takes place directly via the SDA portal, the SDA Windows Client software available for Windows or via VPN. The SMART CONNECT KNX Remote Access also functions as a VPN server, thus offering completely flexible teleservicing and remote access to both qualified electricians and end customers.

The Remote Access is connected with the home KNX installation via the KNX connection. This means that qualified electricians and end customers can access KNX devices from anywhere using the ETS, for instance.

Individual users or groups can be approved or blocked for access, giving occupants full control of access when not at home.



¹ Possible to choose between Layer 2 (TAP) and Layer 3 (TUN) to use OpenVPN in Windows; ² Chargeable additional service sms77 or Messagebird

Charging. The smart way.

SMART CONNECT KNX e-charge II

Use charging points from different manufacturers in your smart home with SMART CONNECT KNX e-charge II. It really is this simple! With SMART CONNECT KNX e-charge II and the use of DLM smart home technology, charging is now also possible even with small household connections. The available electricity is evenly distributed to all charging points, preventing the household connection from becoming overloaded.



Plus points

- | Simple and secure integration of charging points into the KNX
- | Clear overview of supported functions of the charging points
- | Various different manufacturers and even mixed operation possible
- | Fast vehicle charging thanks to dynamic load management
- | Ever-growing list of supported charging points and functions
- | No additional adapter required

Technical data

Rated voltage:	DC 24 V to 30 V
Power consumption:	2.3 W
IP communication:	Ethernet 10/100 BaseT
KNX SPECIALIST	
Connection:	Bus connection terminal
Medium:	TP1, S mode
Current consumption:	typ. 6mA
IP	
Connections:	2 x RJ45 (integrated switch)
Communication:	Ethernet 10/100 BaseT (100/100 Mbit/s)
RS485	
Connection:	Screw terminal, 3-pin (GND, A+, B-)
Communication:	Modbus
Data rate:	Max. 500 kbps
Cable length:	Up to 1200 m
Electrical isolation:	3 kV DC
Ambient temperature:	0 °C to +45 °C
Dimensions:	2 HP (DRA plus)

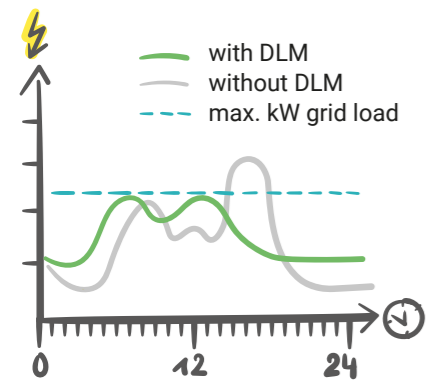
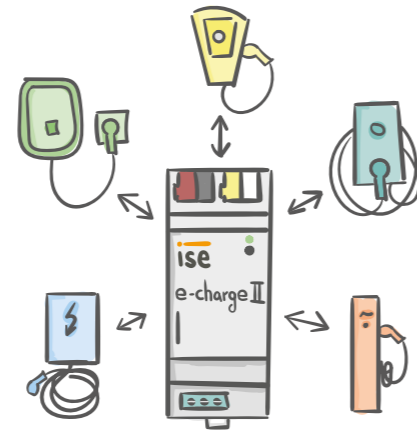
Note: Supply via external DC 24 V. For ETS 5.7.5 or higher.

Ordering info:

Order no. 1-000F-003

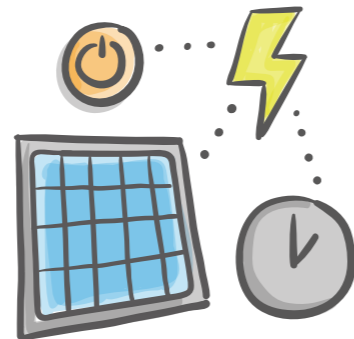
DIFFERENT MANUFACTURERS AND MIXED OPERATION

Need to use charging points from different manufacturers or retrofit other models? No problem! Up to five charging points from different manufacturers can even be integrated in mixed operation. This offers maximum flexibility in terms of different brands and models.



LOAD MANAGEMENT

Load management is offered by almost every charging point manufacturer, but only for the charging points from the manufacturer itself or sometimes even for the same models. E-charge II enables even more! Dynamic load management (DLM) means it is not only possible to use maximum charging current, but also distribute it across all charging points at the same time, regardless of manufacturer and model.



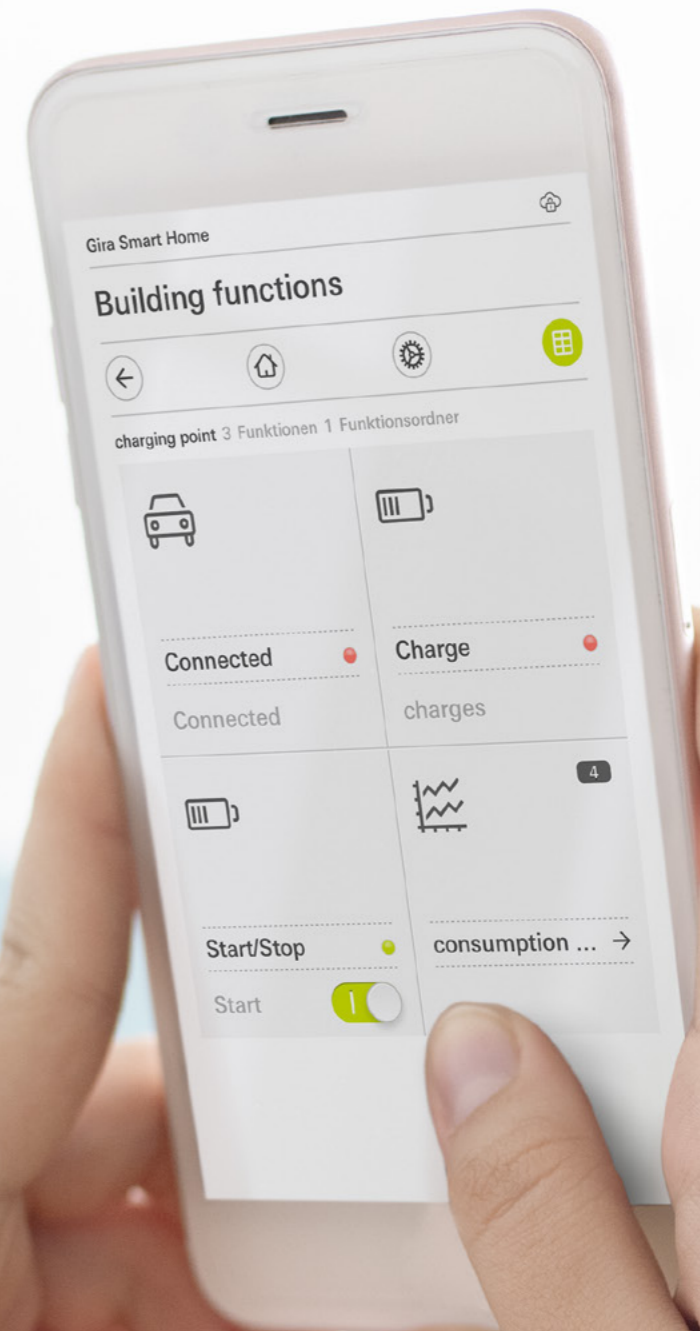
USING PHOTOVOLTAIC TECHNOLOGY

If your PV system generates too much energy, the surplus energy can be used to charge your vehicle! By integrating the e-charge II into your logic, the charging current can be set accordingly in the event of a surplus and the charging process started.



VISUALISATION AND CONTROL

How many cars are being charged at your charging stations? How much power is currently flowing into the car or how much energy has been used to charge vehicles so far? Control when charging can take place or lock the charging point – everything is possible! The e-charge II offers the functions required to be able to display this in your visualisation!



An eye on everything

- | Integration of five charging points per device
 - | Prioritisation of one charging point
 - | Dynamic load management (DLM) integrated
 - | Charging points from different manufacturers can be used at the same time
 - | Grid-supporting control
 - | Charging currents can be controlled without load management (e.g. surplus current charging)
 - | Consumption values (electricity, power, energy consumption and energy consumption and duration of last charge)
 - | Status values (connected, charging, charging complete, charging point status)
- | Start/stop, lock, interrupt or unlock a charging process
 - | Temperature value and temperature warning
 - | Information on vehicle ID and RFID tag
 - | Information on serial number and firmware version of charging point
 - | Fault messages from charging point and device
 - | Integrated RS485 adapter and IP switch (2-gang)
 - | KNX Secure
 - | Completely configurable in ETS
 - | Additions via firmware updates

Note: Some functions are manufacturer-dependent

Strong brands and models



Supported charging points:
www.ise.de/en/e-charge-2

Your charging point is not yet included? Send us an e-mail to support@ise.de

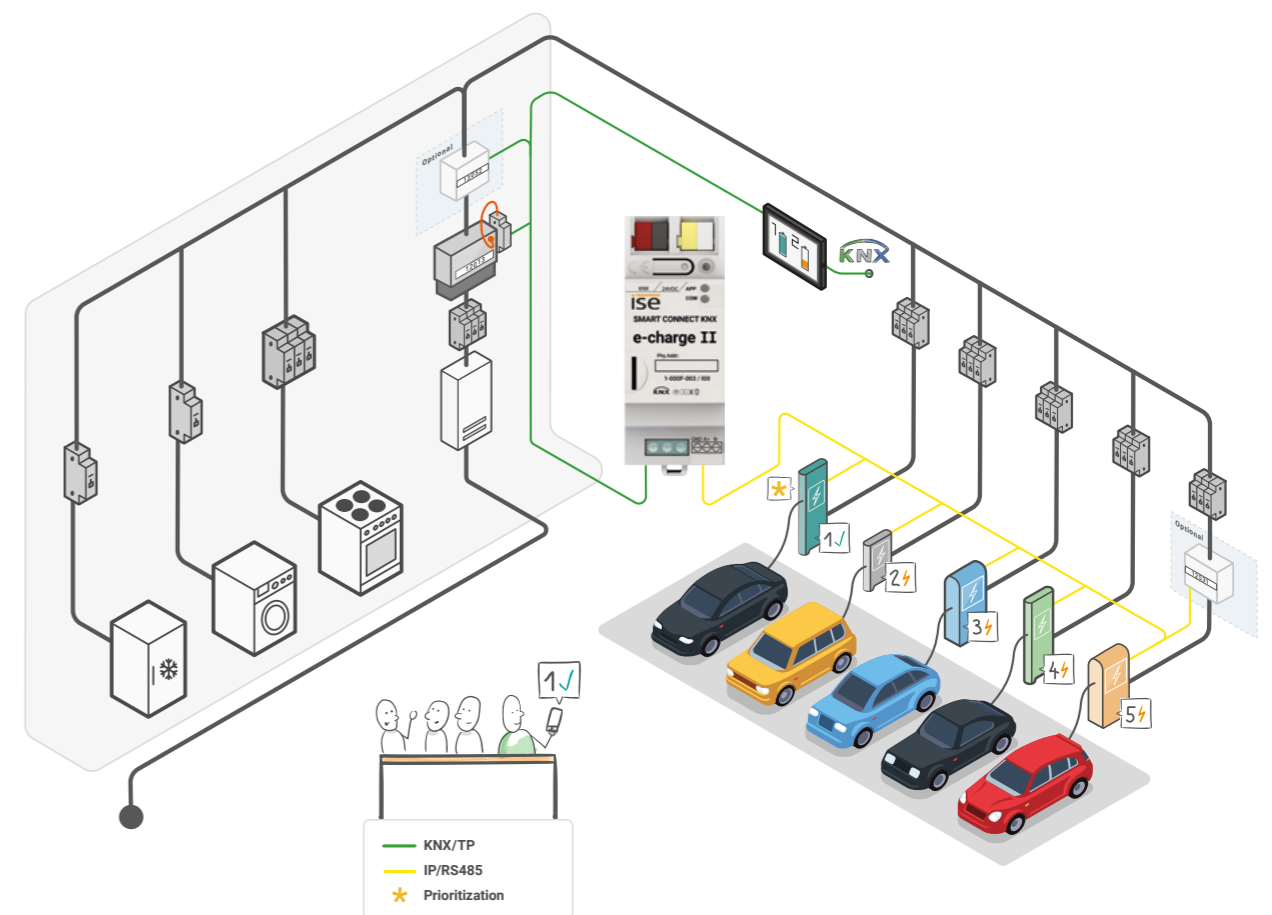
We are continuously working to expand our offer through the integration of more manufacturers.

How it works.

Energy consumption often presents a problem. Too small a mains connection and several energy-consuming appliances in the household at once lead to long charging times with a low charging current. The energy supplier has to install a stronger supply line, which comes with high investment costs. With the SMART CONNECT KNX e-charge II and the use of DLM smart home technology, charging is now possible even with small household connections. The available electricity is evenly distributed to all charging points, preventing the household connection from becoming overloaded.

In companies or hotels, several charging points need to be operated at once. The SMART CONNECT KNX e-charge II allows up to five charging points per gateway.

With the SMART CONNECT KNX e-charge II and a smart meter, DLM enables high power-consuming appliances to be taken into account while avoiding load peaks. The prioritisation of one charging point offers additional benefits for a wide range of use cases.



Sonos is rocking out with KNX.

SMART CONNECT KNX Sonos

The SMART CONNECT KNX Sonos is opening up the world of KNX to this popular family of sound and making it even easier to use. Up to ten Sonos master devices can be connected via IP with dynamic zone creation. Each of these master devices can, in turn, be networked with up to five slave devices. During this process, a separate music program is either assigned to each master device or a master device operates the entire device landscape.



Plus points

- | Separate control of music playback in up to ten rooms
- | Trigger dynamic grouping of loudspeakers via KNX
- | Simple integration into the KNX with ETS
- | Interrupt playback or unmute for announcements such as bells, lunch calls or wake-up alarms.
- | Announcements and playlists directly from the device (microSD card)

Technical data

Rated voltage:	DC 24 V to 30 V
Power consumption:	2 W
IP communication:	Ethernet 10/100 BaseT
KNX communication:	KNX/TP, S mode
KNX medium:	TP1-256
microSD card:	Up to 32 GB (SDHC)
Connections:	2 x RJ45 (integrated switch) Connection and branch terminals for KNX and 24 V
Ambient temperature:	0 °C to +45 °C
Dimensions:	2 HP (DRA plus)

Note: Supply via external DC 24 V. The microSD card is not included in the scope of supply. For ETS 5 or higher.



Ordering info:

Order no. 1-0001-002

A SMART START TO YOUR DAY

Is the light in your bathroom already switched on by a presence detector? Why not switch on your favourite radio station automatically at the same time? Perhaps you'd like to listen to the news in the morning, the latest charts during the day and then something calming in the evening.*

ARE YOU STILL CALLING OUT, "KIDS, LUNCH IS READY"?

Save your vocal cords, and your nerves. Simply start the lunch call on your selected players with the push of a button, even if they're already playing something else or are muted. Your family will be conveniently notified, and nothing else will stand in the way of lunch together.

**Additional logic required.*



A DOOR GONG OVER SONOS?

Why just use the standard door bell when you can have the door gong played on all Sonos players? Music is paused and visitors will never go unheard again.

DETECTING INTRUDERS

Use your Sonos system to simulate presence, for instance using a KNX motion detector. What thief is going to break in if they hear voices or loud dog barking?

GET THE PARTY STARTED

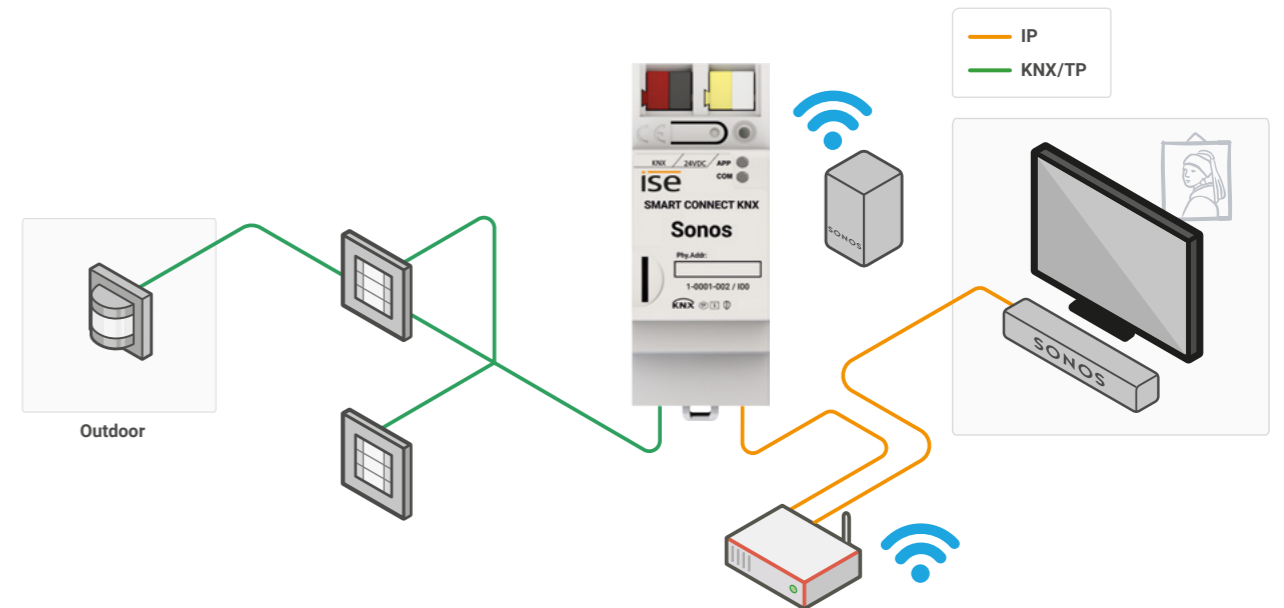
Up to 10 groups with one master device and five slaves can easily be controlled via KNX. Optionally, each room can be operated separately or, using party mode, the entire house at the same time.

An eye on everything

- | Dynamic group creation for up to ten groups, each with one master and up to five slave devices
- | Control of playlist start, pause, mute and stop for each group
- | Playlist (forward/back)
- | Title (forward/back)
- | Random playback of titles
- | Complete volume control of masters, slaves and the entire group
- | Title, artist and album in scrolling text on KNX text objects
- | Direct selection of the starting title of playlists
- | Volume pre-selection and unmuting during source selection
- | Patching-in of announcements (temporary interruption of the current playback)
- | Play music from the microSD card
- | Support for analogue and optical inputs of the Sonos Playbar and Sonos Connect/Connect:Amp
- | Simple integration into KNX (can be completely configured via ETS)
- | Random playback of titles in playlists
- | Random starting point in a playlist
- | Playlist repeat
- | Additions via firmware updates

How it works.

The SMART CONNECT KNX Sonos is simply connected to your KNX installation and the home network on which your Sonos system is also located. Use the ETS to make configurations, create playlists and you're ready to go!





Light on, dimmed or coloured. All without an app.

SMART CONNECT KNX Hue

Hue is the retrofit solution for existing buildings. Whether you want to configure your own sunrise or set the right scene for your house party, the SMART connect KNX Hue has the perfect solution. Thanks to the innovative KNX adapter, up to 25 Hue lights can be controlled by each dimmer or switch via KNX. The LED technology in the light sources opens up a broad spectrum of light tones, from warm to vibrant. Individualized RGB values can be specified for each light.



Plus points

- | Control portable lighting like bedside lamps and floor lamps
- | Execute scenes from the Philips Hue System via KNX
- | Control up to five Philips Hue Bridges with one single device
- | Trigger visual notifications through signal flashing from Philips Hue scenes via KNX
- | Compatible with common Color Pickers (Gira, Elsner, Jung)

Technical data

- Rated voltage:** DC 24 V to 30 V
- Power consumption:** 2 W
- IP communication:** Ethernet 10/100 BaseT
- KNX communication:** KNX/TP, S mode
- KNX medium:** TP1-256
- microSD card:** Up to 32 GB (SDHC)
- Connections:** 2 x RJ45 (integrated switch)
Connection and branch terminals for KNX and 24 V
- Ambient temperature:** 0 °C to +45 °C
- Dimensions:** 2 HP (DRA plus)

Note: Supply via external DC 24 V. For ETS 5 or higher.



Ordering info:
Order no. 1-0002-003



USING AND DIMMING PORTABLE LIGHTS

Take advantage of the opportunity to integrate portable lights into your KNX system straight away – even dimming them (unlike with other lighting controls). You can wake up to a simulated sunrise in the morning, for example.

BEDTIME AND WAKEUP SCENARIOS

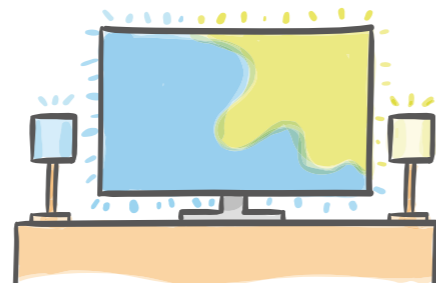
To help children fall asleep more easily, the level of brightness can be reduced. In the morning, a simulated sunrise ensures natural awakening.

SIGNALLING EVENTS

Someone is pressing the doorbell button, the washing machine is finished or a call signal is being initiated. Use Philips Hue lights together with KNX to signal events. You can make the lights flash green when someone presses the doorbell button, for example, so that sleeping children are not woken by a ringing doorbell.

AMBILIGHT TV, PHILIPS HUE AND KNX

If you have a Philips television with the Ambilight function, Philips Hue makes your viewing experience even more intense, colourful and captivating. The same lights can be controlled via KNX.



USE LIGHT AGAINST INTRUDERS

The Philips Hue system can be easily integrated into the occupied-home simulation via KNX. This "puts a spotlight" on uninvited guests, too.



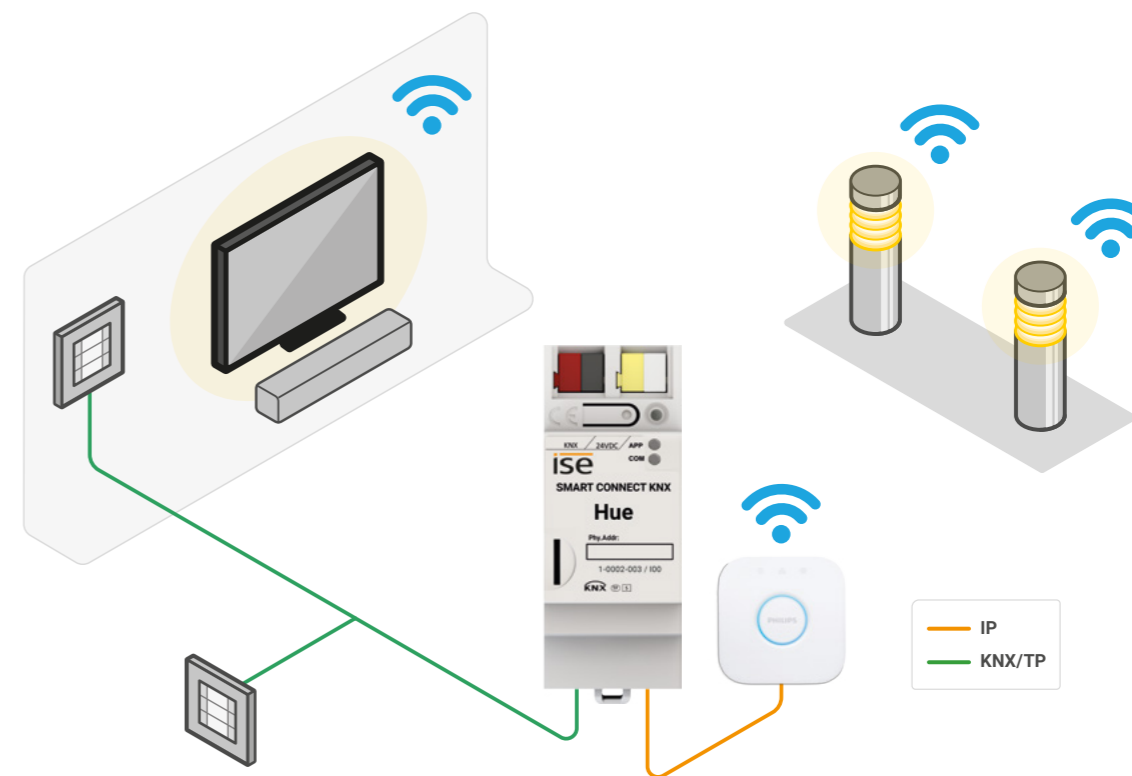
Philips Hue White and Color Ambiance starter set (E27)

An eye on everything

- | Separate control of up to 25 Philips Hue lights
- | Support of up to from five Philips Hue Bridges per device
- | Switching and dimming
- | Individual control of RGB colour values
- | Individual control of the colour temperature
- | Configuration of switch-on brightness per lamp via ETS or device website
- | Configuration of dimming behaviour per lamp via ETS or device website
- | Colour conversion for compatibility with common Color Pickers (Gira, Elsner, Jung)
- | Calling up Philips Hue scenes
- | Signal flashing of Philips Hue scenes (specific duration, return to original state)
- | Alert flash per lamp
- | Colour gradient function per lamp
- | Connection status of Bridge or lamps on KNX
- | ETS product database entry with channel structure
- | Simple integration into the KNX (can be completely configured via ETS)
- | Additions via firmware updates

How it works.

The SMART CONNECT KNX Hue is simply connected to your KNX installation and the home network on which your Philips Hue Bridge is also located. Use the ETS to make configurations, set up lights and you're ready to go!



Vaillant feels good with KNX.

SMART CONNECT KNX Vaillant

With the SMART CONNECT KNX Vaillant, you can now also switch your heating system to standby mode. This allows you to reduce the room temperature setpoint values in all rooms and minimise heating. If you simply want to respond to short-term changes in usage, times and setpoint values for heating and hot water can be changed temporarily or you can adjust ventilation control to your current requirements.



Ordering info:

Order no. S-0001-006
(Product bundle)

Plus points

- | Save energy during longer absences
- | Integration of heating and ventilation scenarios
- | Display of error status and temperature value for up to eight heat generators
- | Overview of consumption and yield values
- | Integration in visualisations, e.g. Gira HomeServer
- | Recommended by Vaillant
- | Additional group objects provide a great deal of key information
- | New functions can be used with both the sensoCOMFORT and multiMATIC controllers

Technical data

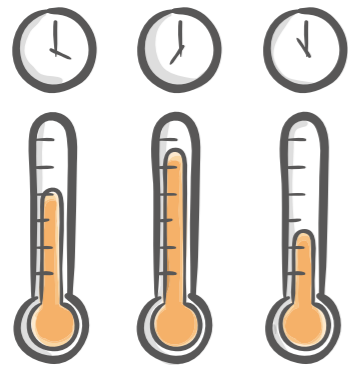
Gateway

Rated voltage:	DC 24 V to 30 V
Power consumption:	1.2 W
IP communication:	Ethernet 10/100 BaseT
KNX communication:	KNX/TP, S mode
KNX medium:	TP1-256
Connections:	1x RJ45 1x USB Connection and branch terminals for KNX and 24 V
Ambient temperature:	0 °C to +45 °C
Dimensions:	2 HP (DRA plus)

eBus adapter

Rated voltage:	Supply via eBUS and USB
Power consumption:	0.1 W
Connections:	Mini USB B eBUS via 2-pole screw terminal
Ambient temperature:	0 °C to +45 °C
Dimensions:	1 HP (DRA)

Note: Supply via external DC 24 V. Set consists of eBus adapter and gateway. Only for systems with the sensoCOMFORT or multiMATIC system controllers. For ETS5 or higher.

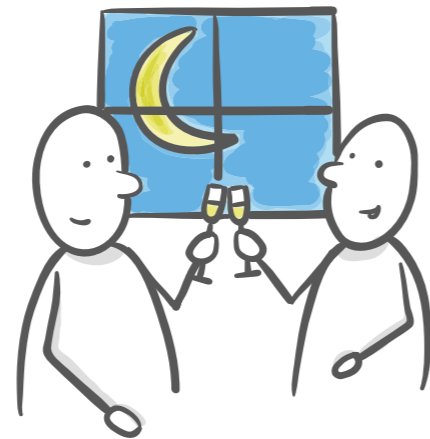


CONTROLLING HEATING AS NEEDED

Times and setpoint values for heating and hot water can now be easily and quickly entered into the visualisation or any other operating device. This saves energy, as the system only works when it's needed.

INFORMED IN DETAIL

Conveniently obtain key information directly from your heating system. Whether you are on the sofa or looking at the panel, you can read important data such as the hot water temperature, the circulation pump status or the minimum setpoint flow temperature for cooling mode quickly and clearly on your KNX visualisation display.



AUTOMATIC VENTILATION

The ventilation system is started automatically after a meeting, such as after the last person has left the room. In this way, the following meeting can begin in a pleasant climate.

A MODE FOR LONG EVENINGS

In order to continue to ensure the well-being of guests as the evening draws on, the night mode of the heating system can also be set to a later point in time with the simple push of a button.



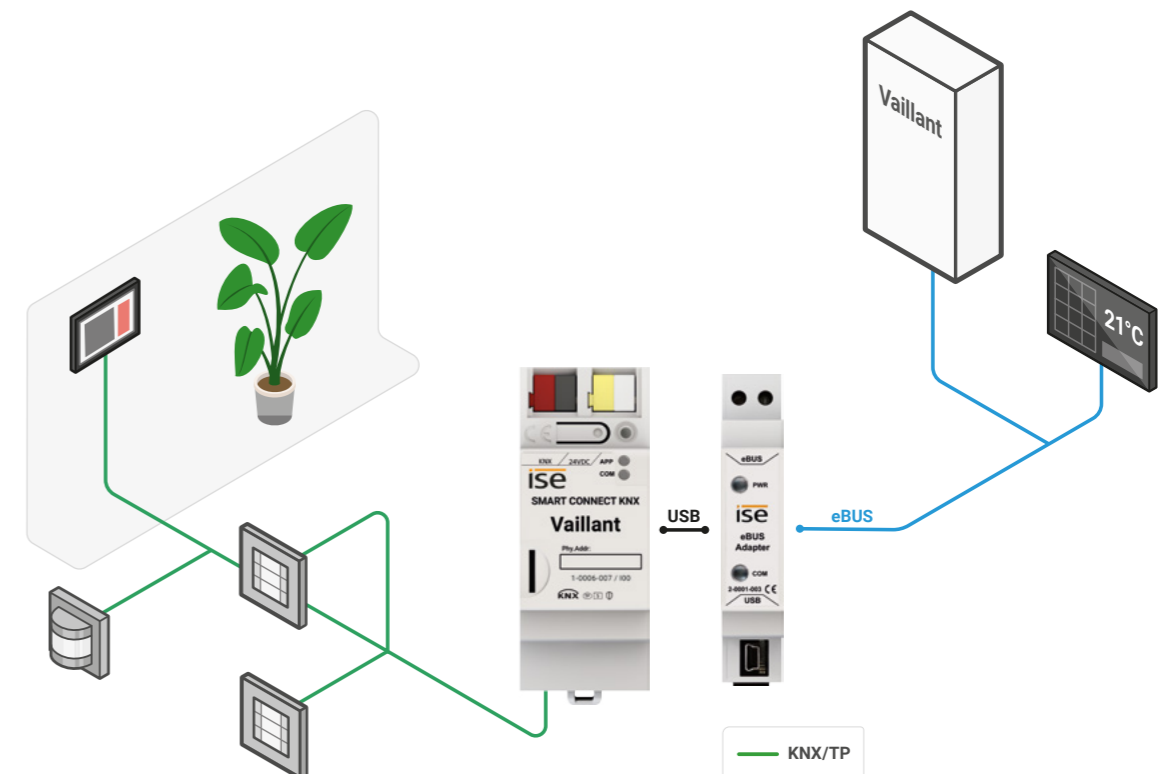
Vaillant sensoCOMFORT (above) Vaillant MultiMatic (below) and Vaillant ecoTEC exclusive

An eye on everything

- | Control of operation mode and temperature setpoint values for up to three heating zones
- | Control of operation mode and temperature setpoint value for hot water supply
- | Control of ventilation system operation mode
- | System information like service mode, error messages, date and time, outside temperature and system status
- | Heating circuit status values: Pump status, flow setpoint temperature, flow temperature, minimum flow setpoint temperature for cooling mode, heating curve for each heating circuit
- | Hot water status values: circulation pump status, charging pump/3-way valve status, hot water temperature
- | Display of error status and temperature value for up to eight heat generators
- | Yield values of solar systems and heat pumps
- | Consumption values for hot water supply and heating (electricity and gas)
- | Handover protocol from installer to system integrator
- | Simple integration into KNX (can be completely configured via ETS)
- | Easy-to-understand structure in the ETS5 thanks to channels
- | Additions via firmware updates

How it works.

The SMART CONNECT KNX Vaillant is simply connected to your KNX installation and the eBUS. Use the ETS to make configurations and carry out the setup and that's all there is to it!





Innovative single-room control. The viega KNX team.

SMART CONNECT KNX viega

The SMART CONNECT KNX viega integrates the innovative Fonterra Smart Control single-room control by viega into the KNX system.* Up to five base stations can be controlled with the SMART CONNECT KNX viega. Up to eight room temperature controllers and 12 outlets can be connected to each of these base stations. For more information on the Fonterra Smart Control, please see www.viega.com



Plus points

- | Save energy during longer absences
- | Integration of panel heating into usage scenarios
- | Integration in visualisations, e.g. Gira HomeServer, Gira X1
- | Absence mode and scheduled return
- | Automatic and constant hydraulic balancing

Technical data

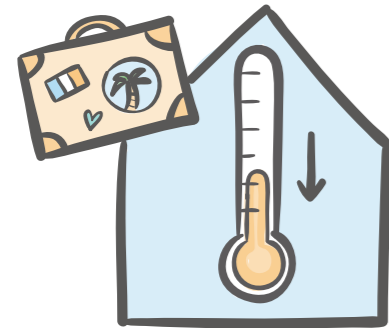
- Rated voltage:** DC 24 V to 30 V
- Power consumption:** 2 W
- IP communication:** Ethernet 10/100 BaseT
- KNX communication:** KNX/TP, S mode
- KNX medium:** TP1-256
- Connections:** 2 x RJ45 (integrated switch)
Connection and branch terminals for KNX and 24 V
- Ambient temperature:** 0 °C to +45 °C
- Dimensions:** 2 HP (DRA plus)

Note: Supply via external DC 24 V. For ETS 5 or higher.



Ordering info:
Order no. 1-000A-008

* If you wish to use the SMART CONNECT KNX viega, you must use Fonterra Smart Control for Fonterra surface temperature regulating systems in Version 3 or higher with firmware version 2.8 - 4.43 or higher, supplied by Viega GmbH & Co. KG.



INTELLIGENT ENERGY SAVING

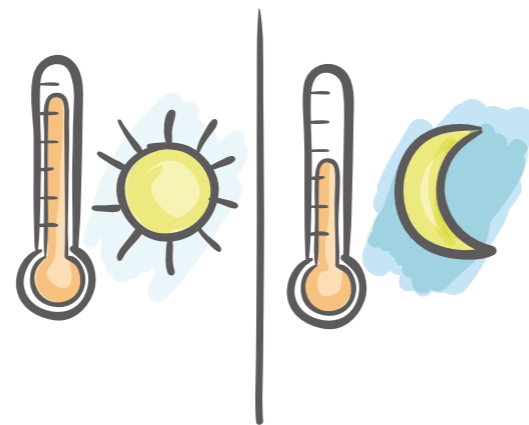
If you are away from home for a longer period, for instance on holiday or a business trip, you can simply switch the system to Absence mode and specify your scheduled return. The system will make sure that the heating is on at the right time, whilst saving considerable energy during the remaining period.

A COMFORTABLE TEMPERATURE AT JUST THE RIGHT TIME

Cosy warmth in the bathroom in the morning, soothing coolness in the bedroom at night. Control the temperature (setpoint value) in every room based on the time of day. The Fonterra Smart Control will take care of the rest.

WHILE YOU'RE AWAY

With remote access, such as the SMART CONNECT KNX Remote Access and a KNX visualisation, you can easily adjust the temperature to suit your requirements even when you're not at home.



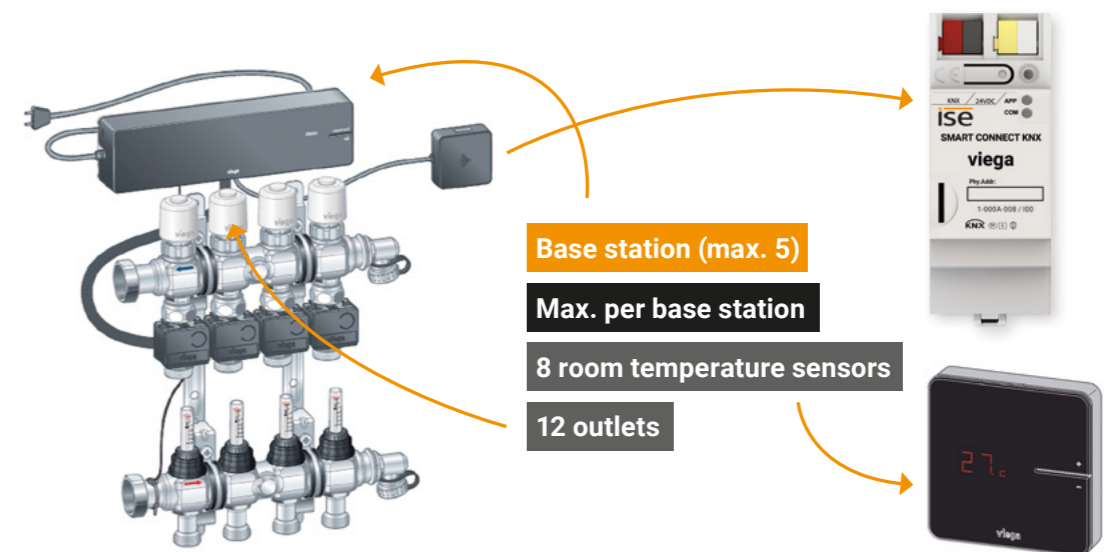
Fonterra Smart Control thermostat

An eye on everything

- | Support of five base stations each with up to eight room temperature controllers and 12 outlets
- | Room temperature control
- | Switch between heating and cooling modes
- | Power level control
- | Absence control
- | System information like error messages, actual temperature or updates
- | Simple integration into KNX (can be completely configured via ETS)
- | Additions via firmware updates

How it works.

The SMART CONNECT KNX viega is simply connected to your KNX installation and the home network on which your Fonterra Smart Control base station with WiFi module is also located.





Saunier Duval snuggles up with KNX.

SMART CONNECT KNX Saunier Duval

With the SMART CONNECT KNX Saunier Duval you can now also switch your heating system to standby mode. This allows you to reduce the room temperature setpoint values in all rooms and minimise heating. If you simply want to respond to short-term changes in usage, times and setpoint values for heating and hot water can be changed temporarily or you can adjust ventilation control to your current requirements.



Plus points

- | Save energy during longer absences
- | Integration of heating in usage scenarios
- | Display of error status and temperature value for up to eight heat generators
- | Overview of consumption and yield values
- | Integration in visualisations, e.g. Gira HomeServer

Technical data

Gateway

- Rated voltage:** DC 24 V to 30 V
- Power consumption:** 1.2 W
- IP communication:** Ethernet 10/100 BaseT
- KNX communication:** KNX/TP, S mode
- KNX medium:** TP1-256
- Connections:** 1x RJ45
1x USB
Connection and branch terminals for KNX and 24 V
- Ambient temperature:** 0 °C to +45 °C
- Dimensions:** 2 HP (DRA plus)

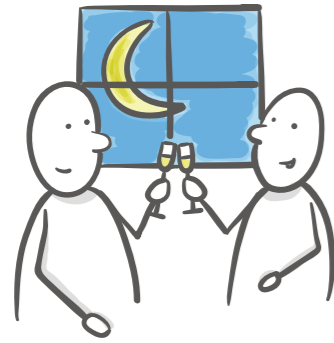
eBus adapter

- Rated voltage:** Supply via eBUS and USB
- Power consumption:** 0.1 W
- Connections:** Mini USB B
eBUS via 2-pole screw terminal
- Ambient temperature:** 0 °C to +45 °C
- Dimensions:** 1 HP (DRA)

Note: Supply via external DC 24 V. Set consists of eBus adapter and gateway. Only for systems with the MiPro Sense system controller. Saunier Duval covers all SDBG brands. For ETS5 or higher.

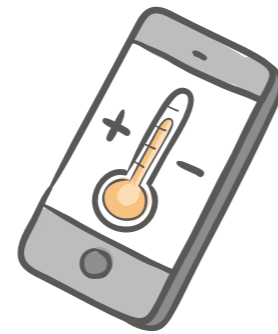
Ordering info:

Order no. S-0001-017



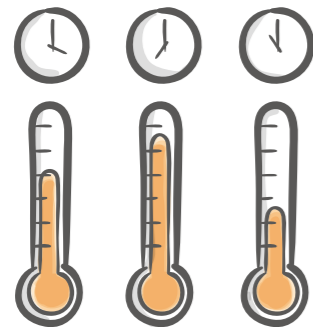
A MODE FOR LONG EVENINGS

In order to continue to ensure the well-being of guests as the evening draws on, the night mode of the heating system can also be set to a later point in time with the simple push of a button.



INFORMED IN DETAIL

Conveniently obtain key information directly from your heating system. Whether you are on the sofa or looking at the panel, you can read important data such as the hot water temperature, the circulation pump status or the minimum setpoint flow temperature for cooling mode quickly and clearly on your KNX visualisation display.



CONTROLLING HEATING AS NEEDED

Times and setpoint values for heating and hot water can now be easily and quickly entered into the visualisation or any other operating device. This saves energy, as the system only works when it's needed.



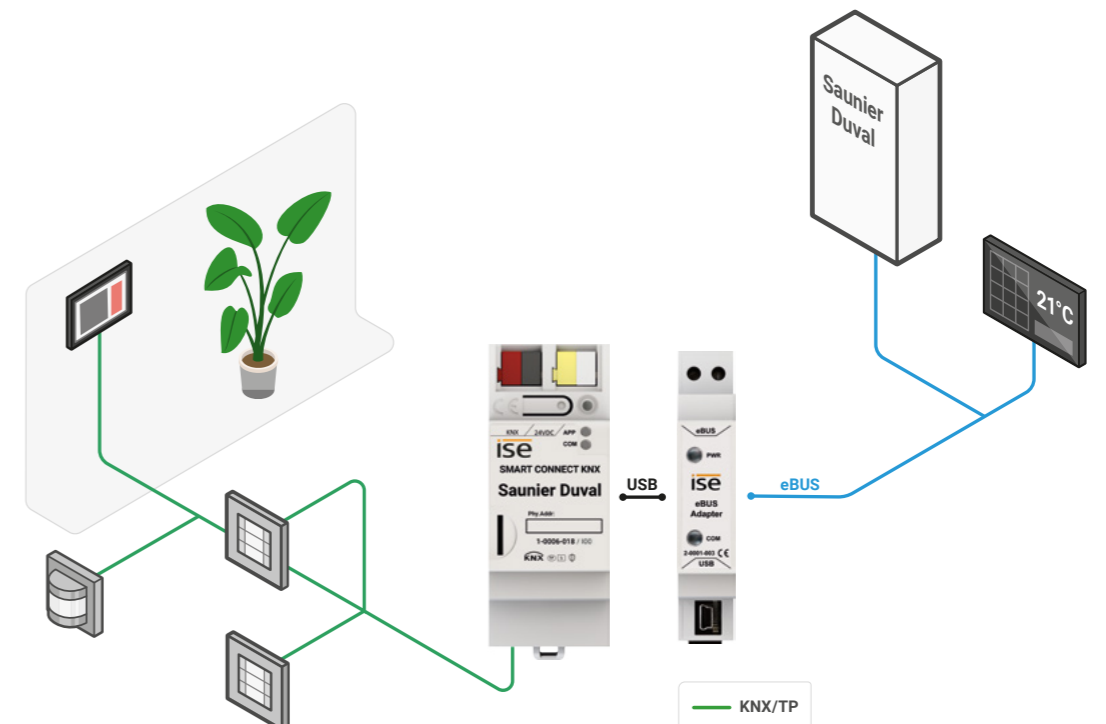
MiPro Sense

An eye on everything

- | Control of operation mode and temperature setpoint values for up to three heating zones
- | Control of operation mode and temperature setpoint value for hot water supply
- | System information like service mode, error messages, date and time, outside temperature and system status
- | Heating circuit status values: Pump status, flow setpoint temperature, flow temperature, minimum flow setpoint temperature for cooling mode, heating curve for each heating circuit
- | Hot water status values: circulation pump status, charging pump/3-way valve status, hot water temperature
- | Display of error status and temperature value for up to eight heat generators
- | Yield values of solar systems and heat pumps
- | Consumption values for hot water supply and heating (electricity and gas)
- | Handover protocol from installer to system integrator
- | Simple integration into KNX (can be completely configured via ETS)
- | Easy-to-understand structure in the ETS5 thanks to channels
- | Additions via firmware updates

How it works.

The SMART CONNECT KNX Saunier Duval is simply connected to your KNX installation and the eBUS. Use the ETS to make configurations and carry out the setup and that's all there is to it!



Easy access to Vaillant GeoTHERM/3.

SMART CONNECT Modbus Vaillant

As a Modbus TCP/IP gateway, the SMART CONNECT Modbus Vaillant provides access to a Vaillant geoTHERM/3 heat pump as well as up to three Vaillant VR60 mixer modules and up to six Vaillant VR90 remote control devices. The established Modbus TCP/IP standard enables the convenient integration of Vaillant heat pumps into the building technology (e.g. Schneider SmartStruxure, Fidelix).



Plus points

- | Convenient integration integrate Vaillant heat pumps into the building technology
- | Control of a geoTHERM/3 heat pump via Modbus TCP/IP
- | Up to three VR60 mixer modules and up to six VR90 remote control devices can also be controlled
- | Recommended by Vaillant

Technical data

Gateway

Rated voltage:	DC 24 V to 30 V
Power consumption:	1.2 W
IP communication:	Ethernet 10/100 BaseT
Communication:	Modbus TCP/IP
Connections:	1x RJ45 1x USB Connection and branch terminals for 24 V
Ambient temperature:	0 °C to +45 °C
Dimensions:	2 HP (DRA plus)

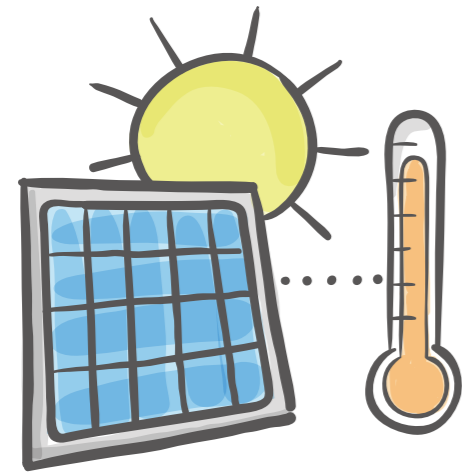
eBus adapter

Rated voltage:	Supply via eBUS and USB
Power consumption:	0.1 W
Connections:	Mini USB B eBUS via 2-pole screw terminal
Ambient temperature:	0 °C to +45 °C
Dimensions:	1 HP (DRA)

Note: Supply via external DC 24 V. Set consists of eBus adapter and gateway. Compatible with Vaillant geoTHERM/3 VWS220/3 - 460/3 heat pumps.

Ordering info:

Order no. S-0002-007
(Product bundle)

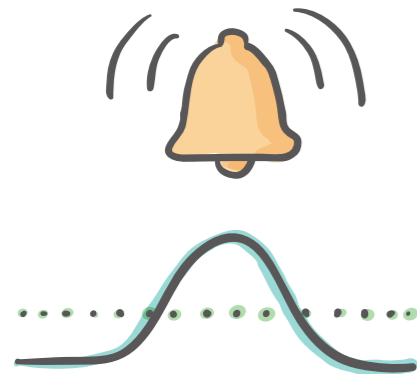
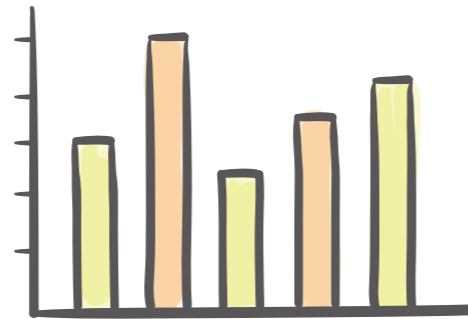


SOLAR-POWER SYSTEM AND HEAT PUMP COMBINATION

Utilise the sun's energy efficiently and link your solar-power system to your heating system. The SMART CONNECT MODBUS provides you with the required access to the heat pump.

VARIABLE OPTIMISATION

Configure your building management system (BMS) to record and visualise the system values of the heat pump. Using automatic recordings in the form of diagrams and tables, you can analyse and further refine the effectiveness of different variable optimisations.



MONITORING

Use your BMS to create limit values which, if exceeded or undershot, trigger the system to notify you automatically. This enables a swift response to deviations. Remedy problems before comfort is impaired. Uncomfortably cold shower water is a thing of the past.

An eye on everything

- | Control of operating mode and temperature setpoint values for the heating circuits
- | Control of operating mode for the heat pump
- | Control of operation mode for up to three mixer modules
- | Control of operating mode and temperature setpoint value for hot water supply
- | Control of the operation mode of an auxiliary heater
- | Access to status information such as temperature and pressure sensor values for integration into the building technology
- | Easy configuration of system dimensioning via the device website
- | Additions via firmware updates

How it works.

The SMART CONNECT Modbus Vaillant is easy to connect with the network and eBus. The network settings and Vaillant system dimensioning are configured and set up via the device website.





Home entertainment for the smart home.

SMART CONNECT KNX Panasonic

The SMART CONNECT KNX PANASONIC gateway enables the customised integration of up to four televisions in the KNX. Get ready to be inspired by endless new possibilities!



Plus points

- | Watch IP camera images on your TV
- | Show messages on the TV device
- | KNX certification
- | Can be completely configured via ETS
- | Use your Panasonic TV device in diverse scenarios

Technical data

Rated voltage:	DC 24 V to 30 V
Power consumption:	2 W
IP communication:	Ethernet 10/100 BaseT
KNX communication:	KNX/TP, S mode
KNX medium:	TP1-256
Connections:	2 x RJ45 (integrated switch) Connection and branch terminals for KNX and 24 V
Ambient temperature:	0 °C to +45 °C
Dimensions:	2 HP (DRA plus)

Note: Supply via external DC 24 V. Please note: for supported Panasonic models and countries, see the Panasonic compatibility list at www.ise.de. For ETS 5 or higher.



Ordering info:
Order no. 1-000C-000



CONVENIENT WAKE-UP

A smart day is dawning. The blinds slowly open, allowing daylight to flood the room. Your Panasonic TV device greets you with your favourite news channel.

LEAVING THE HOUSE

After catching up on the latest news, you leave the house. It's not only the lighting that switches off – your Panasonic TV device will turn to standby or become part of the occupied-home simulation for burglary prevention.

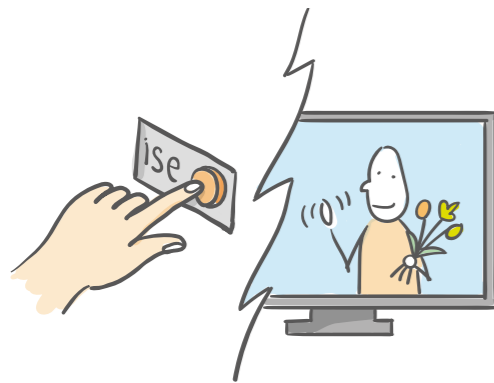
YOUR MESSAGES ON THE TV

Is your smart washing machine finished? Movement detected in the garden? Through self-defined screen texts, you can also choose to display such messages on your TV. Convenient customisation.



AN EVENING OF CINEMA

You've had a busy day – it's time to relax and enjoy the evening! Your customised cinema experience starts as soon as you switch on your Panasonic TV device. Blinds darken the room, light and sound create the perfect ambience. Fetch the popcorn and some friends and get ready for an authentic cinema sensation.



SOMEONE'S AT THE DOOR

Just one glance at your Panasonic TV device will tell you whether your guests have arrived at the door. See what's happening on the external camera conveniently from the sofa.

SAVE STANDBY COSTS

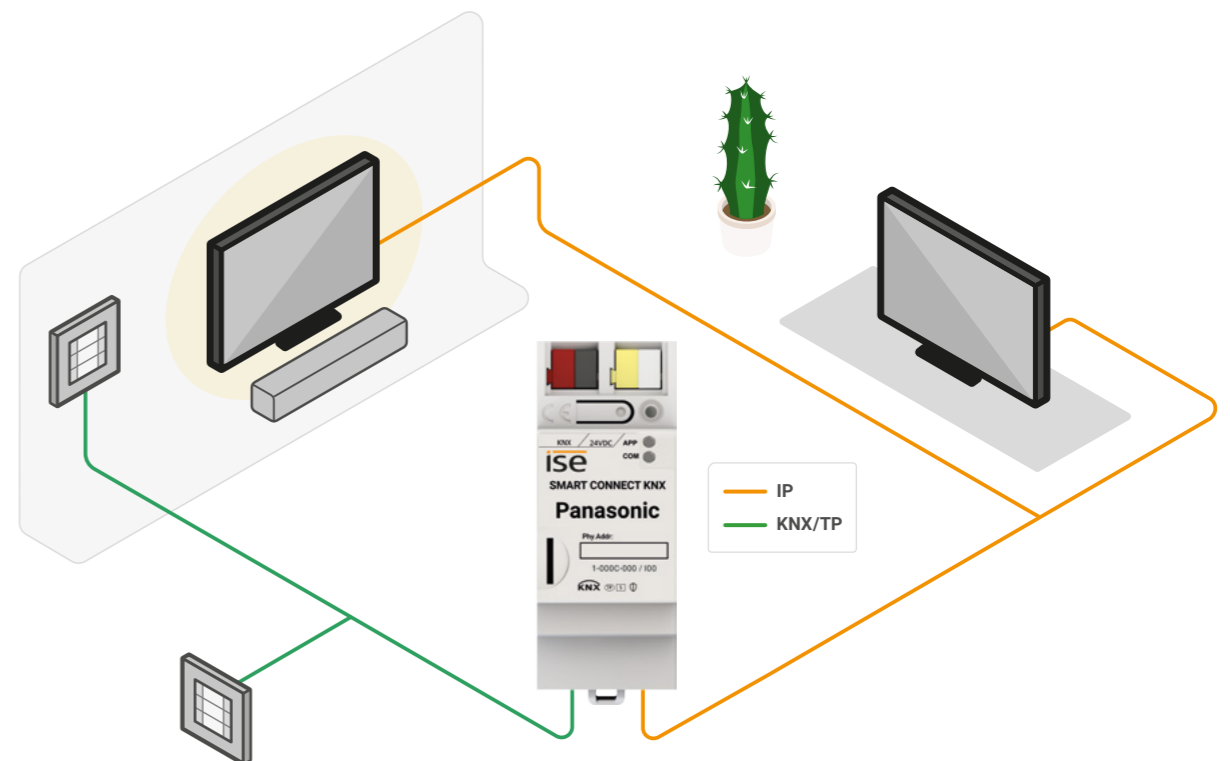
Do you want to save energy? If your Panasonic TV device is switched to standby, the device socket outlet will be switched off after a defined period, and will only switch on again through a TV scene or motion detector.

An eye on everything

- | Control of up to 4 TV devices
- | Switch the TV device on and off
- | "Wake up" the TV device via Wake on LAN and then switch it on
- | Control the volume (switch sound on and off, turn volume up/down or set it directly to an absolute or relative value)
- | Program control (switch to previous program channel or select a specific station)
- | Transfer camera images, for instance from an external camera
- | Store up to ten links
- | Display messages on TV device: use up to ten self-defined texts or dynamically display texts from other devices, e.g. "Movement detected in garden" from an outside camera
- | Source selection: flexibility of choice between the sources of the TV device, e.g. switch conveniently between HDMI input and receivers
- | Status displays: current station, source, volume, mute state, operating state or error status
- | Simple integration into KNX (can be completely configured via ETS)
- | Additions via firmware updates

How it works.

The SMART CONNECT KNX Panasonic is simply connected to your KNX installation and the home network on which your Panasonic TV device is also located. Use the ETS to configure the gateway and you're ready to go!





The perfect combination of smart home and security.

SMART APP KNX Axis

Combine the world of KNX with the security technology of Axis Communications. Utilise the strengths of both worlds and integrate network cameras, door stations and network loudspeakers into the KNX – with no additional hardware. Simply install our plug-in on the Axis IP product, configure and you're ready to go!



Axis Dome Q37



Axis P1364 network camera

Plus points

- | Perfect integration of Axis network devices into usage scenarios
- | Stronger combination of both systems, motion detector (KNX) triggers recording or Cross Line Detection (camera) switches on the light
- | Privacy (masking) can be controlled via KNX, for instance through presence or absence
- | Camera responds directly to KNX/IP after successful installation
- | Third-party applications on the camera can also communicate with KNX
- | In addition to network cameras, all Axis network devices with ACAP are also supported

Technical data

KNX communication: KNX/IP (routing), S mode

Note: The plug-in can only be used on network devices from Axis Communications with ACAP support. Please see www.ise.de for supported camera requirements. For ETS5 or higher.



Ordering info:

Order no. single licence A-0001-008
Order no. 5 volume licence A-0001-019
Order no. 10 volume licence A-0001-020



RELIABLE MOTION DETECTION VIA KNX

Who needs umpteen camera recordings of trees moving in the wind or moths flitting around the light? In future, use your KNX motion detector to start recordings and record only those things which are important.

ENJOY YOUR PRIVATE SPHERE

If you'd like to enjoy the garden, simply disable motion detection and/or enable the private zone masks on your surveillance camera, for instance with a KNX door contact on your terrace door. No more bothersome disconnection of the PoE power supply!

THE CAMERA PRODUCES THE DETERRENT

If unauthorised persons tamper with your house, the camera registers this movement and not only starts recording, but also switches on the lighting and television via KNX as well as dog barking or voices, for instance via your Sonos sound system. There are no limits to your imagination. Discover deterrents on a whole new level.

OUTWITTING MADE DIFFICULT

Someone sabotages your camera by covering it or spraying it with paint. As soon as this happens, an alarm is triggered and you are notified. This means you can actively intervene as the event unfolds, not after the saboteur has finished the job.

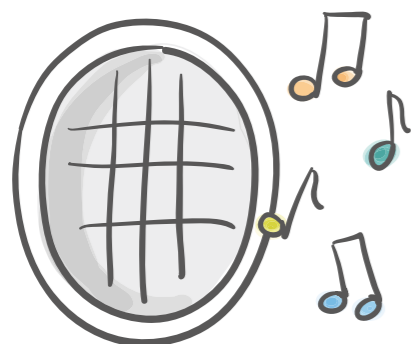


DOOR STATION WITH KNX

Don't just integrate network-only cameras into the KNX – include your door stations from Axis Communications as well. Use the call button to play a ring tone via your Sonos sound system, for example.

LOUDSPEAKER WITH KNX

Your Axis Communications loudspeakers can be integrated into your KNX system as well, thus enabling the control of loud-speaker playback in your shop, for example.



An eye on everything

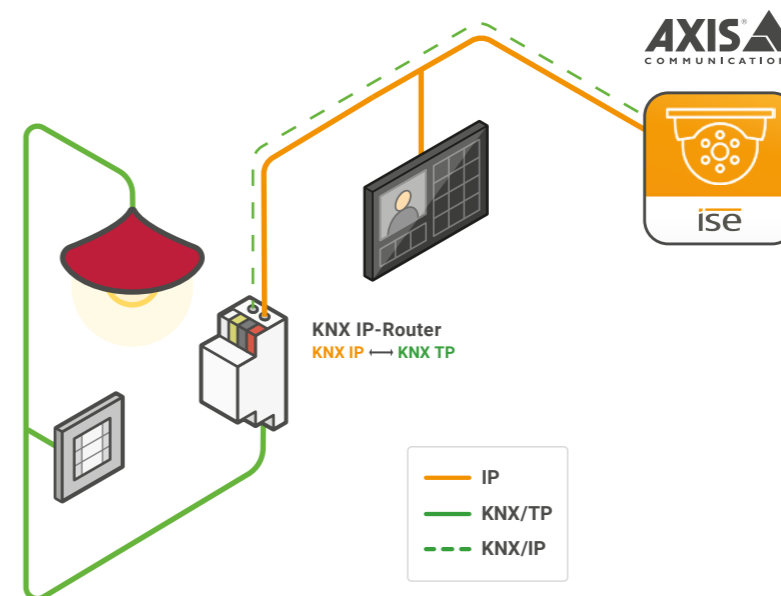
- | Support of Axis network cameras
- | Support of Axis WLAN cameras*
- | Support of Axis D2050-VE Network Radar Detector
- | Support of Axis door stations
- | Support of Axis network loudspeakers
- | 30 group objects for sending from KNX to the Axis camera (1 bit)
- | 30 group objects for sending from the Axis camera to KNX (variable bit length)
- | Control of actions on the camera
- | Triggering of image, video and/or camera message sending
- | With PTZ cameras, predefined positions can be focused on
- | Camera settings (properties) can be read out and sent to the KNX
- | Sending of a message to the KNX with access to the camera's live stream
- | Monitoring of the camera itself, such as for overheating or connection interruption to the video saving location
- | Third-party applications can send values to the KNX
- | Simple integration into KNX (can be completely configured via ETS and the camera's event system)

**Only in combination with other system components that support reliable communication, such as Gira KNX/IP router.*

How it works.

The SMART APP KNX Axis plug-in is installed directly on a network device (such network camera) based on an Axis ACAP (AXIS Camera Application Platform). After successful installation, the Axis network device is a KNX/IP device and communicates with the world of KNX via KNX/IP routing. The plug-in is configured on the network device (event system) and in the ETS.

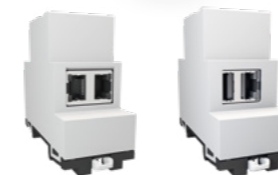
KNX installations are usually implemented with two wires (TP), meaning that a KNX/IP router has to be present in this installation (often already present in KNX visualisation systems) to enable communication between KNX/IP and KNX/TP.



Everything's possible with Programmable.

SMART CONNECT KNX Programmable

From electricity meter to heating: With the SMART CONNECT KNX Programmable, third-party devices can be connected to the KNX bus simply and reliably. For communication with the third-party system, the IP and USB interfaces can be used. The Programmable is the first successful affordable alternative to costly device development.



Ordering info:
Art. no.
1-0005-006
2 x RJ45

Ordering info:
Art. no.
1-0004-005
1 x USB, 1 x RJ45

Plus points

- | Simple integration of third-party systems into KNX
- | Ready-certified KNX device
- | Connection of third-party systems via IP or USB
- | Execution of .NET application (C# or VB.Net)
- | Comprehensive SDK
- | Protection of own application against unintentional duplication

An eye on everything

- | Programming of the application in C# or VB.Net.
- | Up to 64 KNX group objects (variable bit length)
- | Version 1-0004-005: 1x IP and 1x USB connection
- | Version 1-0005-006: 2x IP connection
- | Ready-certified KNX device (can be completely configured via ETS)*
- | Additions via firmware updates

Technical data

- Rated voltage:** DC 24 V to 30 V
- Power consumption:** 2 W (Ethernet version: 2x RJ45)
3 W (USB version: RJ45 + USB with 300 mA)
- IP communication:** Ethernet 10/100 BaseT
- KNX communication:** KNX/TP, S mode
- KNX medium:** TP1-256
- Connections:** 2x RJ45 with integrated switch (Ethernet version)
RJ45 + USB (USB version)
Connection and branch terminals for KNX and 24 V
- Ambient temperature:** 0 °C to +45 °C
- Dimensions:** 2 HP (DRA plus)

Note: Supply via external DC 24 V. For ETS5 or higher.

*The KNX certification for the SMART CONNECT KNX Programmable is limited to the interworking ability with KNX products from other manufacturers.

Powered by Programmable.

Everything's possible with SMART CONNECT KNX Programmable



Your finger. Your key.

EKEY KNX CONNECT. WE CONNECT EKEY WITH YOUR SMART HOME.

Fingerprints have not only been a resounding success on smartphones and tablets, but also in access control for companies or private residential buildings. Blocking and lost or stolen keys will become a thing of the past with an ekey fingerprint access solution – you always have your finger with you.

Technical data and retailer info:

NETYARD AG
 Schanzenstr. 40
 40549 Düsseldorf
 Germany
 igt@netyard.de
 www.netyard.de/ekey

E3/ DC stores your electricity and is designed to incorporate KNX.

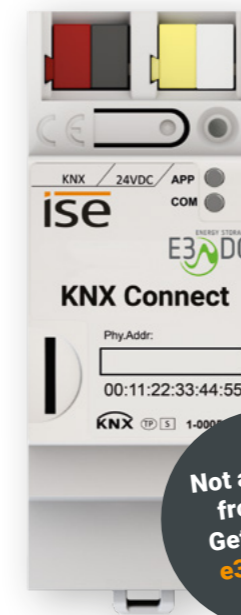
The S10 Hauskraftwerk home power station is a classic in the E3/DC range. Featuring a solar power inverter, energy management and online portal, this all-in-one system stores solar electricity efficiently and provides power to devices right when they need it. This means the Hauskraftwerk electricity storage system and the central power switching unit are rolled into one, allowing E3/DC customers to achieve a very high level of self-sufficiency. E3/DC has also developed the unique

TriLINK® technology for this home power station. It provides backup power supply with solar recharging in the event of a power failure.

The KNX CONNECT module from E3/DC GmbH is based on the PROGRAMMABLE and integrates the S10 series home power station into KNX.

Technical data and retailer info:

E3/DC GmbH
 Karlstrasse 5
 49074 Osnabrück
 Germany
 Tel.: +49 (0)541 760268-0
 Fax: +49 (0)541 760268-199
 info@e3dc.com
 www.e3dc.com



Would you too like to integrate your products and services into KNX? Let us know!
 T +49 (0)441 68006-11 | E sales@ise.de

Into the world of KNX. The spark of new freedom.

KNX RF USB stick

Communication between KNX devices and PC tools is made possible. The interface structure corresponds to a common USB stick (USB 2.0 type A). The device does not feature any operating or display elements. A KNX RF/TP media coupler is required in the KNX system for communication with fixed-wired KNX TP components.



Plus points

- | Wireless communication between PC and KNX/RF (radio)
- | Start-up and troubleshooting via ETS5 or higher
- | Support of longer telegrams (extended frames)
- | Supports the commissioning of KNX/RF Secure devices
- | No additional USB driver required

An eye on everything

- | Addressing, programming and troubleshooting of KNX devices via ETS from version 5
- | Required standard Windows drivers are automatically installed or enabled upon device insertion
- | Supports the common EMI protocol (cEMI)
- | Supply of device via the PC's USB interface
- | Connection of PC and KNX via KNX RF radio
- | Additions via firmware updates

Technical data

Rated voltage:	DC 5 V
Radio frequency:	868.3 MHz
Transmission power:	max. 25 mW
Transmission range in free field:	100 m (typical)
USB port:	2.0 type A
KNX communication:	RF1.R, S mode
Ambient temperature:	-10 °C to +55 °C
Dimensions:	Approx. 21 mm x 59 mm x 7.5 mm

Note: For ETS5 or higher.



Ordering info:

Order no. 3-0001-004

Test living in a KNX home.

Experience ise products live!

Experience exclusive ease of living. Visitors can experience intelligently networked solutions with all their senses in the smart house in Rhauderfehn or a luxury private loft in Alling. You can even combine your visit with an overnight stay if you wish.

ise is a technology partner in the Connected Comfort brand alliance. Our products are integrated into viega and Vaillant systems and via our remote access.

We provide the technological backbone to make your home smarter. Connected Comfort is an alliance between the Gira, Jung, Brumberg, Dornbracht, Revox, Schüco, Vaillant and Warema brands. The common goal is to make buildings more intelligent across all trades and create completely new living experiences to a premium level.



Connected Comfort Headquarters
Hohenzollernstrasse 5, 30161 Hannover, Germany
Phone: +49 (0)511 167 67 120
E-Mail: info@connected-comfort.de
www.connected-comfort.de

powered by



We inspire. And that's a promise.

CONSULTING AND SALES

T +49 (0)441 68006-11

F +49 (0)441 68006-15

E sales@ise.de

Further national and international specialist electrical trade partners can be found on our website
www.ise.de/en/products/sources-of-supply

SUPPORT

If you have any technical questions on products you have already purchased, please contact our support department from Monday to Friday from 8:30 – 4:30 p.m. or by e-mail.

T +49 (0)441 68006-12

F +49 (0)441 68006-15

E support@ise.de

GENERAL CONTACT

ise Individuelle Software und Elektronik GmbH
Osterstraße 15
26122 Oldenburg, Germany

T +49 (0)441 68006-0

F +49 (0)441 68006-10

E info@ise.de



OUR NEWSLETTER. REGISTER NOW!

We keep you up to date on software developments, new products, firmware updates, tips, tricks and much more. Simply subscribe to our newsletter: www.ise.de/en/news/newsletter

UPDATES ENSURE THE CONTINUOUS IMPROVEMENT OF OUR PRODUCTS. CHECK AT WWW.ISE.DE

More information, technical documentation, data sheets, software, the latest firmware and much more can be found on our website under the corresponding products. If you can't find what you're looking for, please get in touch with us.

ise.de

SAY HELLO



ise Individuelle Software und Elektronik GmbH
Osterstraße 15, 26122 Oldenburg, Germany
T +49 (0)441 68006-11 **F** +49 (0)441 68006-15 **E** sales@ise.de